

Information sheet

HOW TO READ YOUR WATER METER

Regularly recording your water meter reading is a great way to monitor your water consumption and can help you to discover leaks.

Where is my water meter?

It is important to know where your water meter is located so that:

You can easily take readings

You can quickly turn off water if an emergency like a burst pipe occurs on your property.

House: Your water meter is usually towards the street at the front of the property protected by a cover. You may need to remove the cover before you can take a reading.

Flat: In large buildings the water meter can be found in the utilities cupboard on each floor, or at the front of the property in smaller buildings.

Contact your water provider if you need assistance locating your water meter.

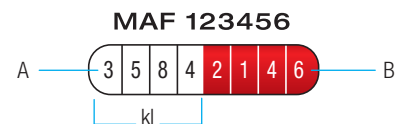
Checking for leaks

Reading your water meter is a great way to check for leaks within the pipe work on your property. Simply follow these steps:

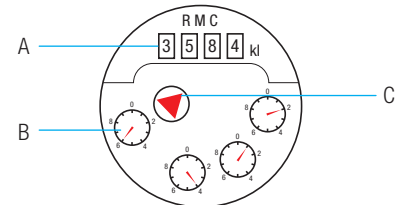
Take a reading after the last person has gone to the toilet or brushed their teeth at night.

Take a second reading before anyone uses any water in the morning.

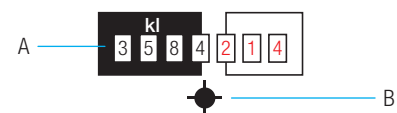
If no one has used any water overnight and the reading has changed, then you know there is a leak. Contact a plumber to locate and repair the leak.



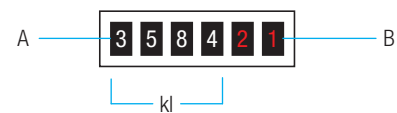
- A Black numbers on a white background register kilolitres.
- B White numbers on red background register hundreds of litres, tens of litres, litres and if there is a fourth red dial tenths of litres.



- A Black numbers on white background (4 digits) register kilolitres.
- B Four 'clock' dials at bottom of meter, register starting from right, hundreds of litres, tens of litres, litres and tenths of litres.
- C 'Tell tale' detects small usage and leaks.



- A Black numbers on white background register kilolitres. Red numbers on white background register hundreds of litres, tens of litres and litres.
- B 'Tell tale' detects small usage and leaks (twenty revolutions per litre).



- A White numbers on black background register kilolitres.
- B Red numbers on black background register hundreds of litres and tens of litres.

