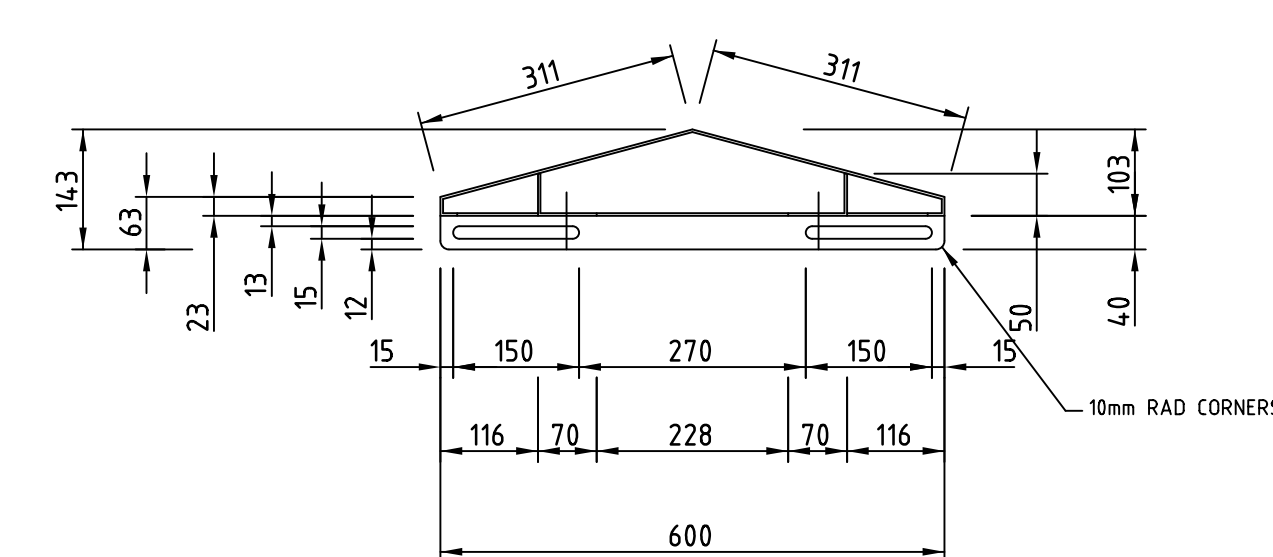
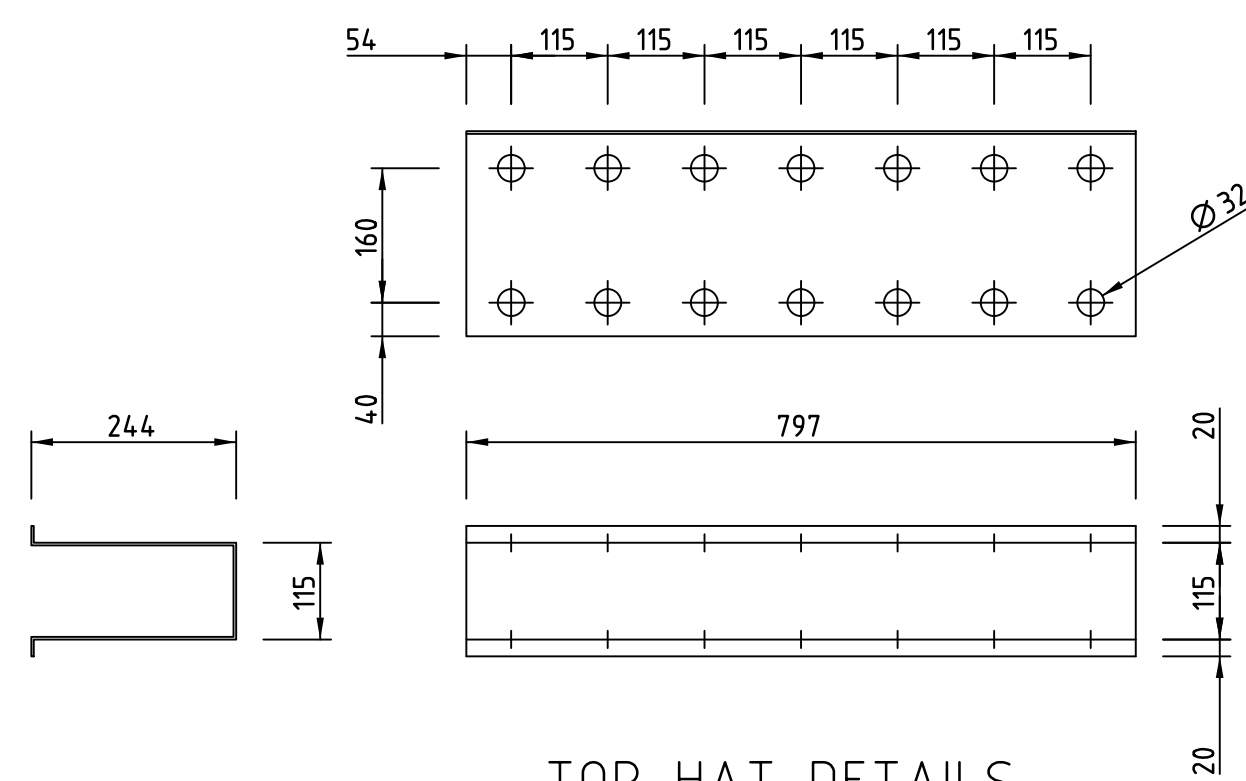


TOP & BOTTOM OF PLINTH TO BE NOTCHED OUT
FOR Ø40 HOLE ENTRY IN BOTTOM OF CUBICLE

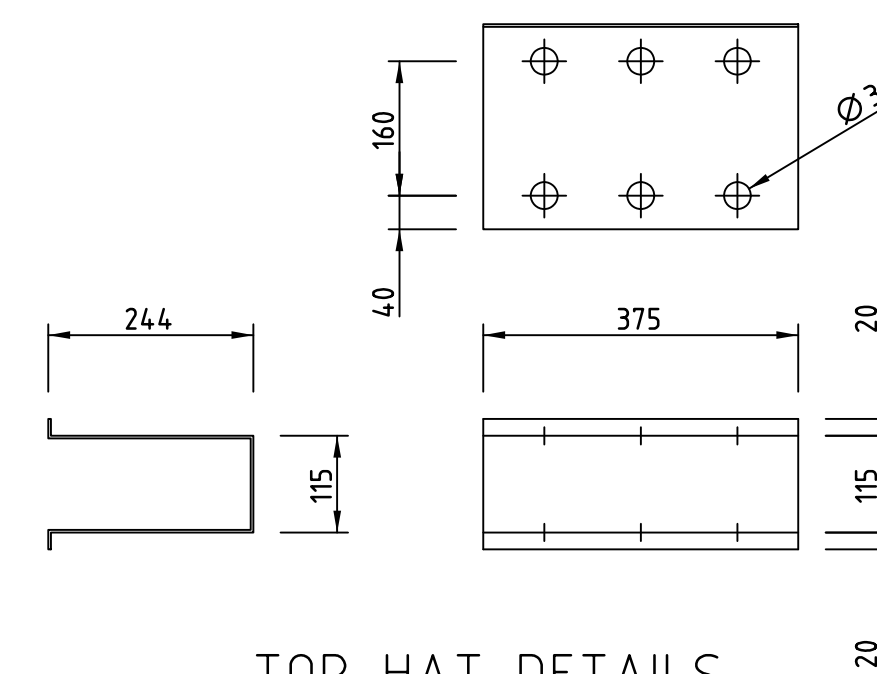
PLINTH DETAILS



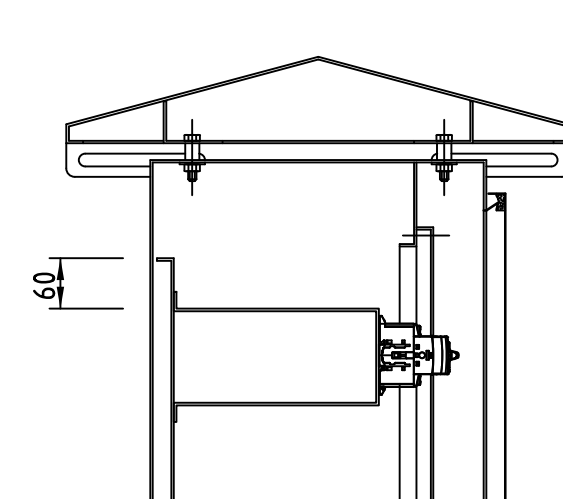
ROOF CANOPY DETAILS



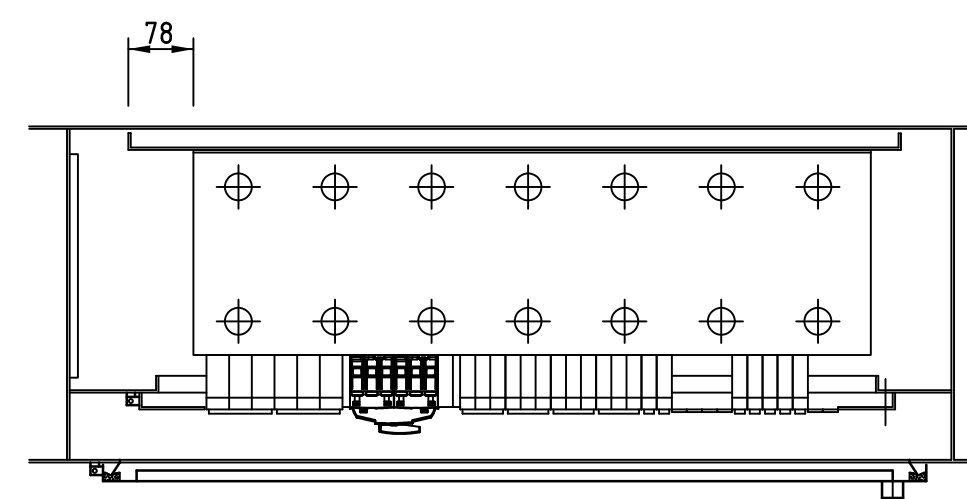
TOP HAT DETAILS



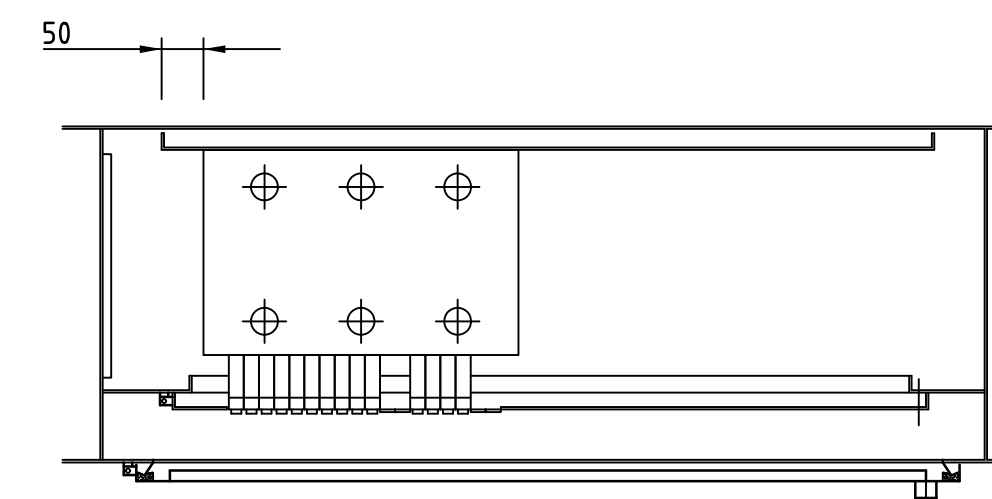
TOP HAT DETAILS



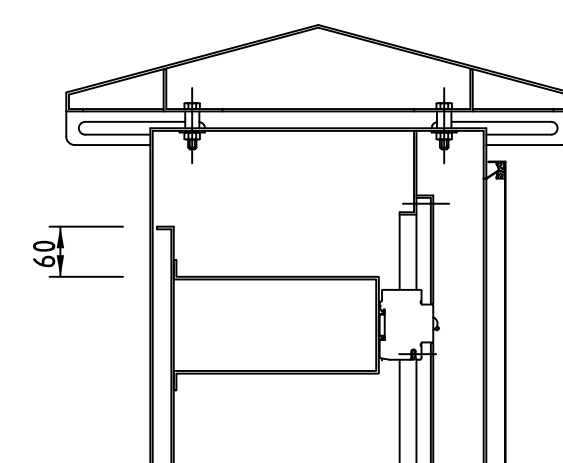
DIN-T CB VIEW



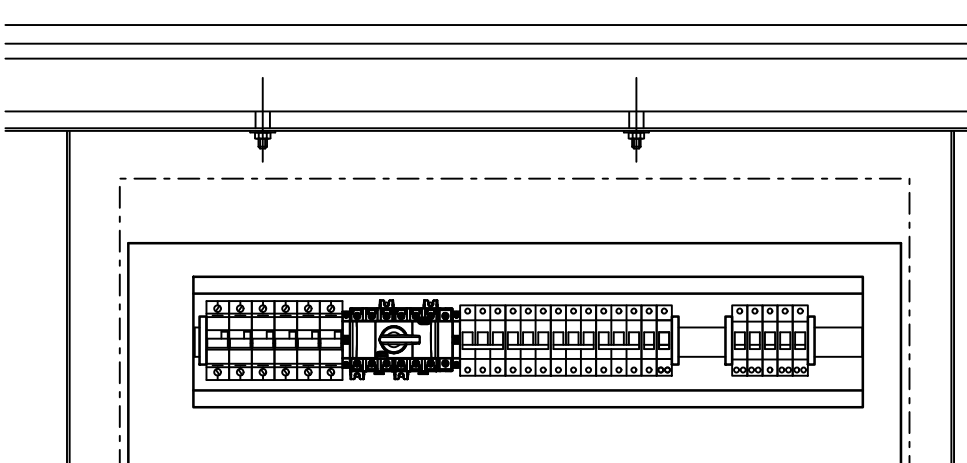
CIRCUIT BREAKERS TOP VIEW



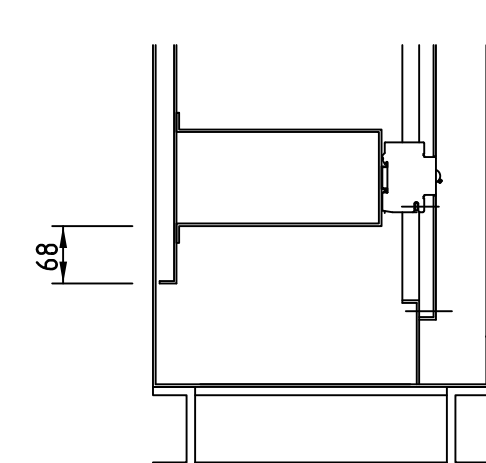
CIRCUIT BREAKERS TOP VIEW



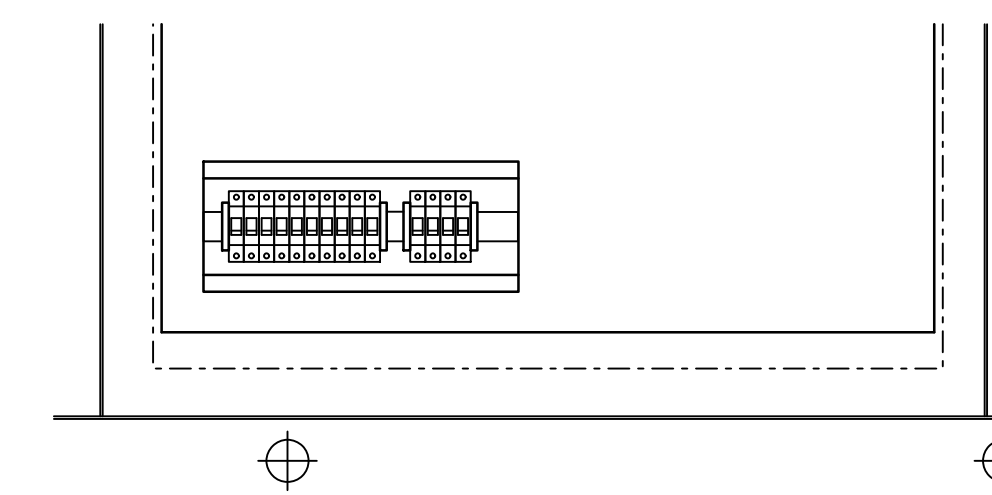
DIN-T CB VIEW



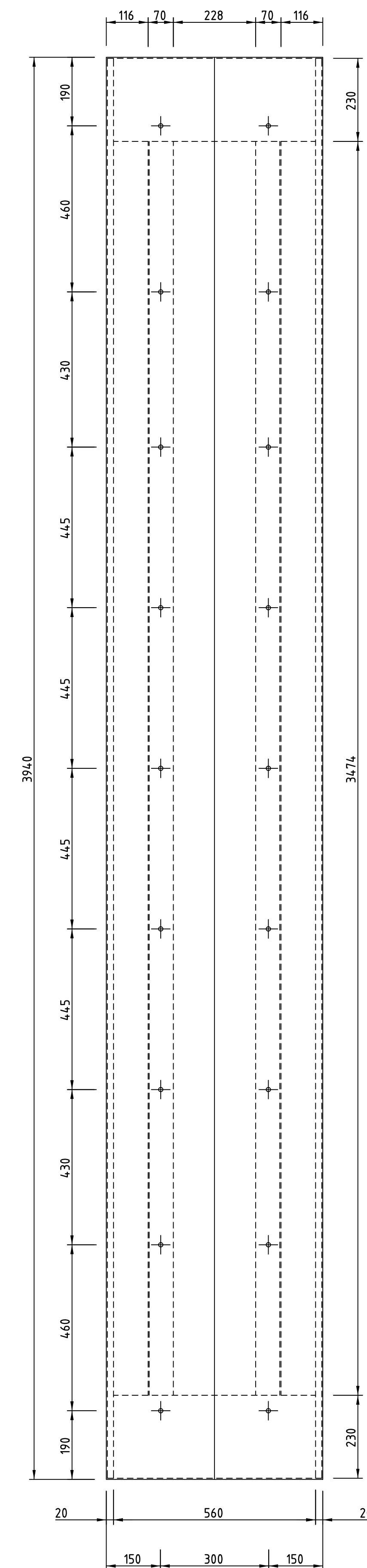
CIRCUIT BREAKERS FRONT VIEW



DIN-T CB VIEW



CIRCUIT BREAKERS FRONT VIEW



REVISIONS					REFERENCES		
	7	29/3/21	REVISED TOP HAT SET UPS & RE-DRAWN IN DGN FORMAT.	P.S.		A1-47775	STD SPS - PUMP STN 7.5kW TO 22kW (VSD) - DIRECT METERED - I & C - DRG INDEX
	No.	DATE	DESCRIPTION	APP'D		PLAN No.	TITLE

DESIGNED BY:



DO NOT SCALE

GIPPSLAND WATER
DRAWING STATUS

STANDARD DRAWING

GIPPSLAND WATER FACILITY CODE
YYCPYY

XALF AA	
DRAWING No.	REV.



GIPPSLAND WATER

STANDARD SEWERAGE PUMP STATION
PUMP STATION 7.5kW TO 22kW (VSD) - DIRECT METERED
SIDE BY SIDE - PUMP STATION CUBICLE
SECTIONAL ARRANGEMENT - SHEET 2 OF 2