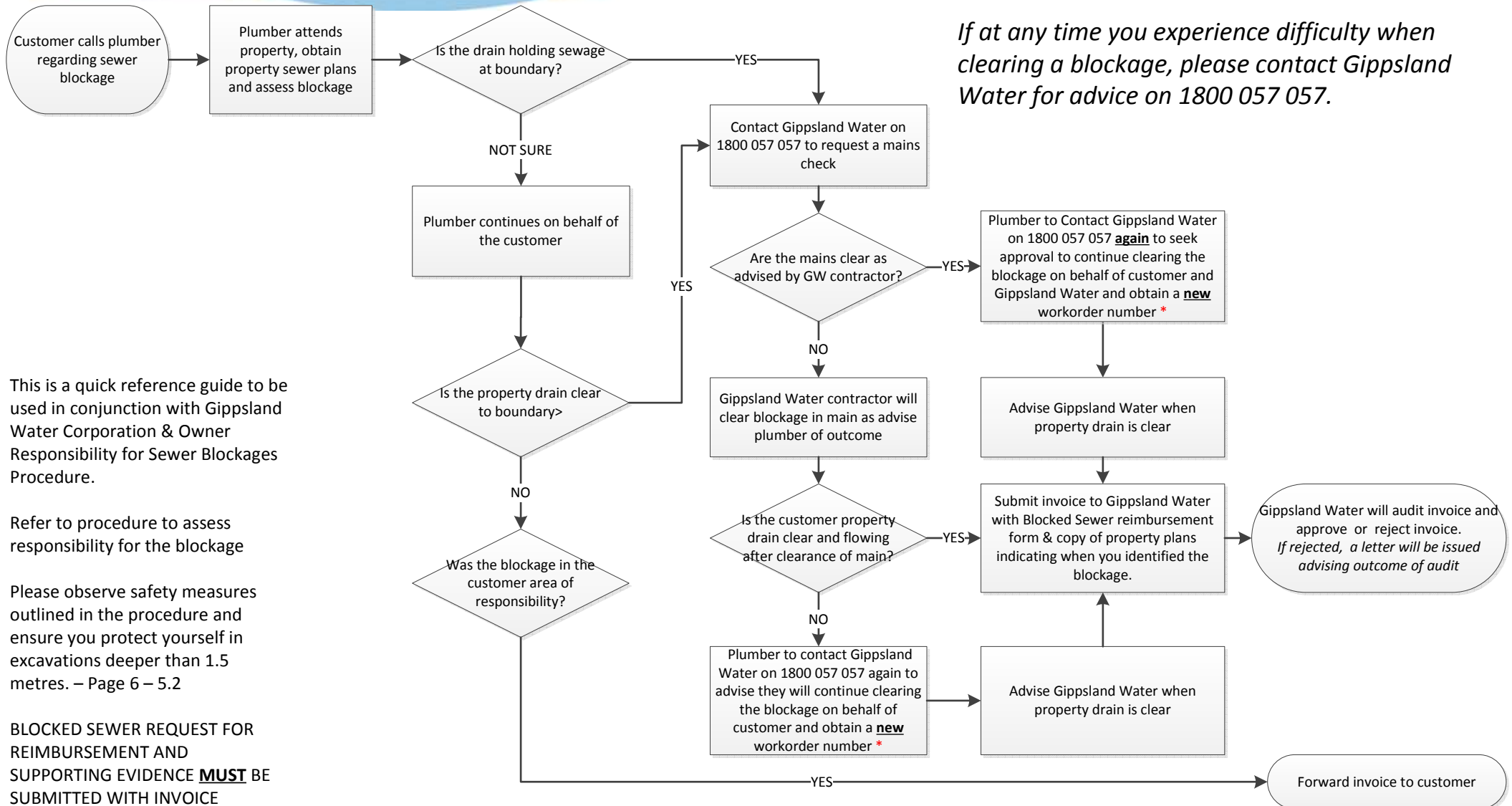


# Sewer Blockage Quick Reference Guide for Plumbers



*If at any time you experience difficulty when clearing a blockage, please contact Gippsland Water for advice on 1800 057 057.*

This is a quick reference guide to be used in conjunction with Gippsland Water Corporation & Owner Responsibility for Sewer Blockages Procedure.

Refer to procedure to assess responsibility for the blockage

Please observe safety measures outlined in the procedure and ensure you protect yourself in excavations deeper than 1.5 metres. – Page 6 – 5.2

**BLOCKED SEWER REQUEST FOR REIMBURSEMENT AND SUPPORTING EVIDENCE MUST BE SUBMITTED WITH INVOICE**

\* A workorder is not a guarantee of payment