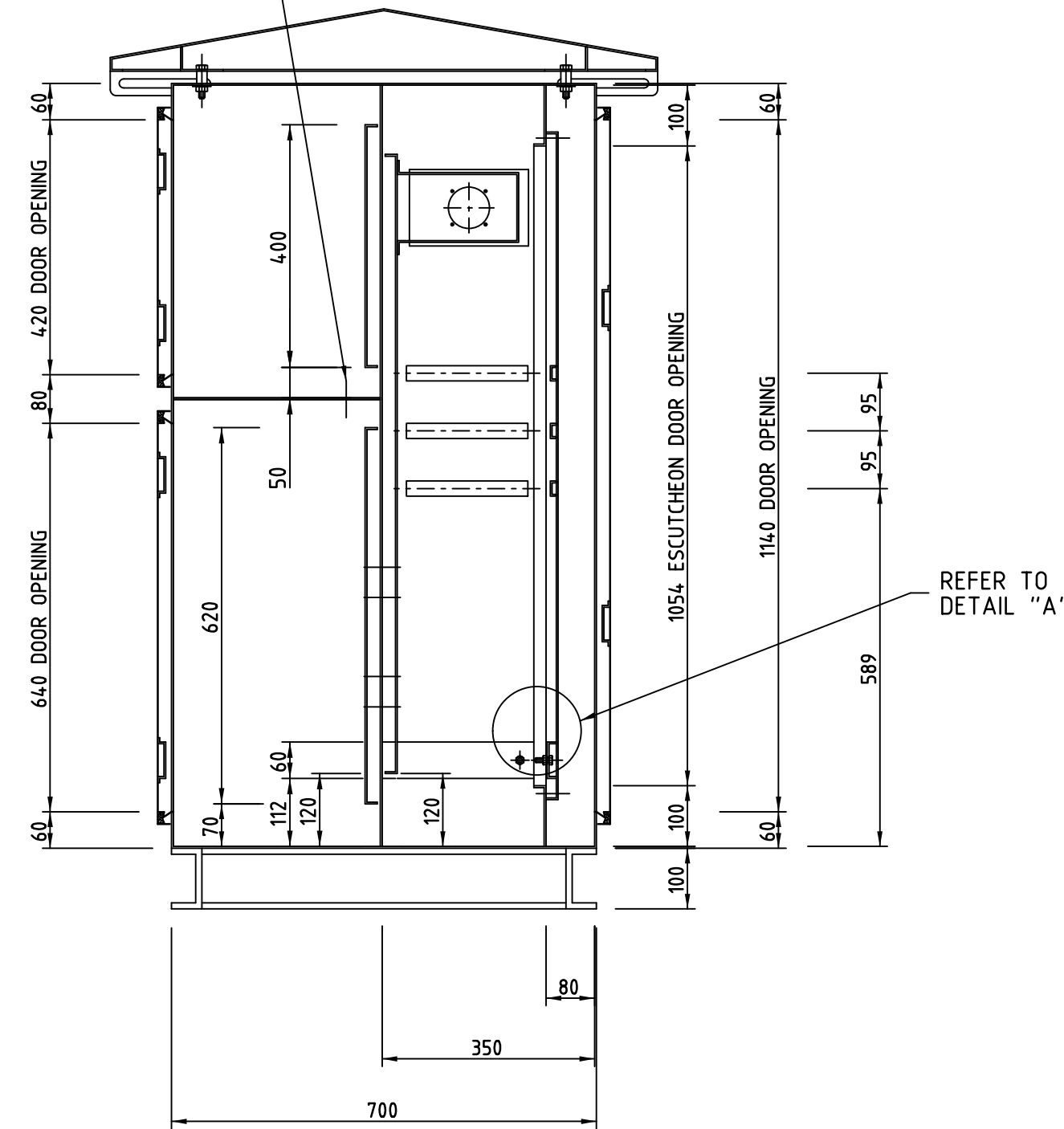
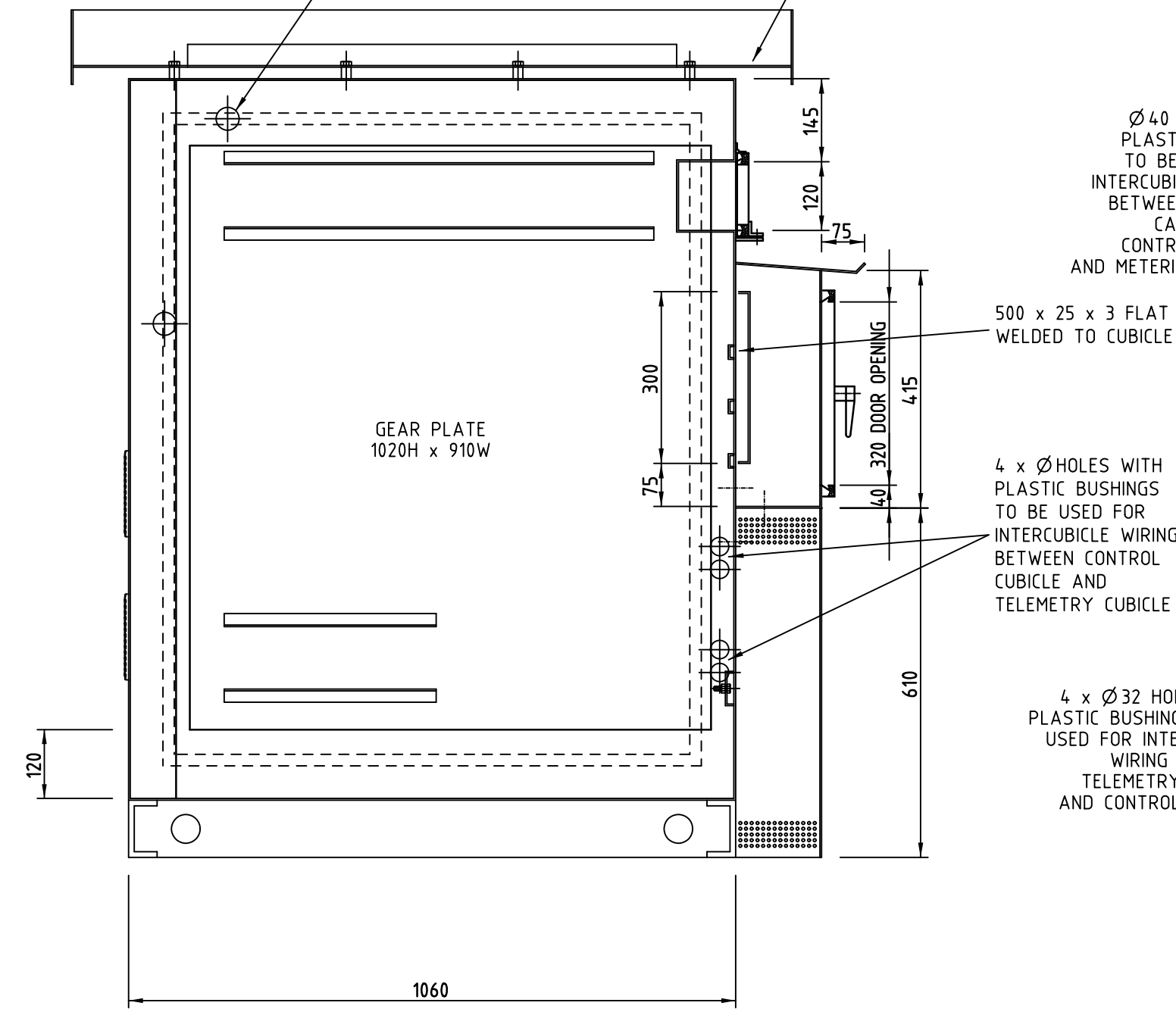


2 x Ø32 HOLES WITH PLASTIC BUSHINGS TO BE USED FOR INTERCUBICLE WIRING BETWEEN INSTRUMENT CUBICLE AND TELEMETRY CUBICLE



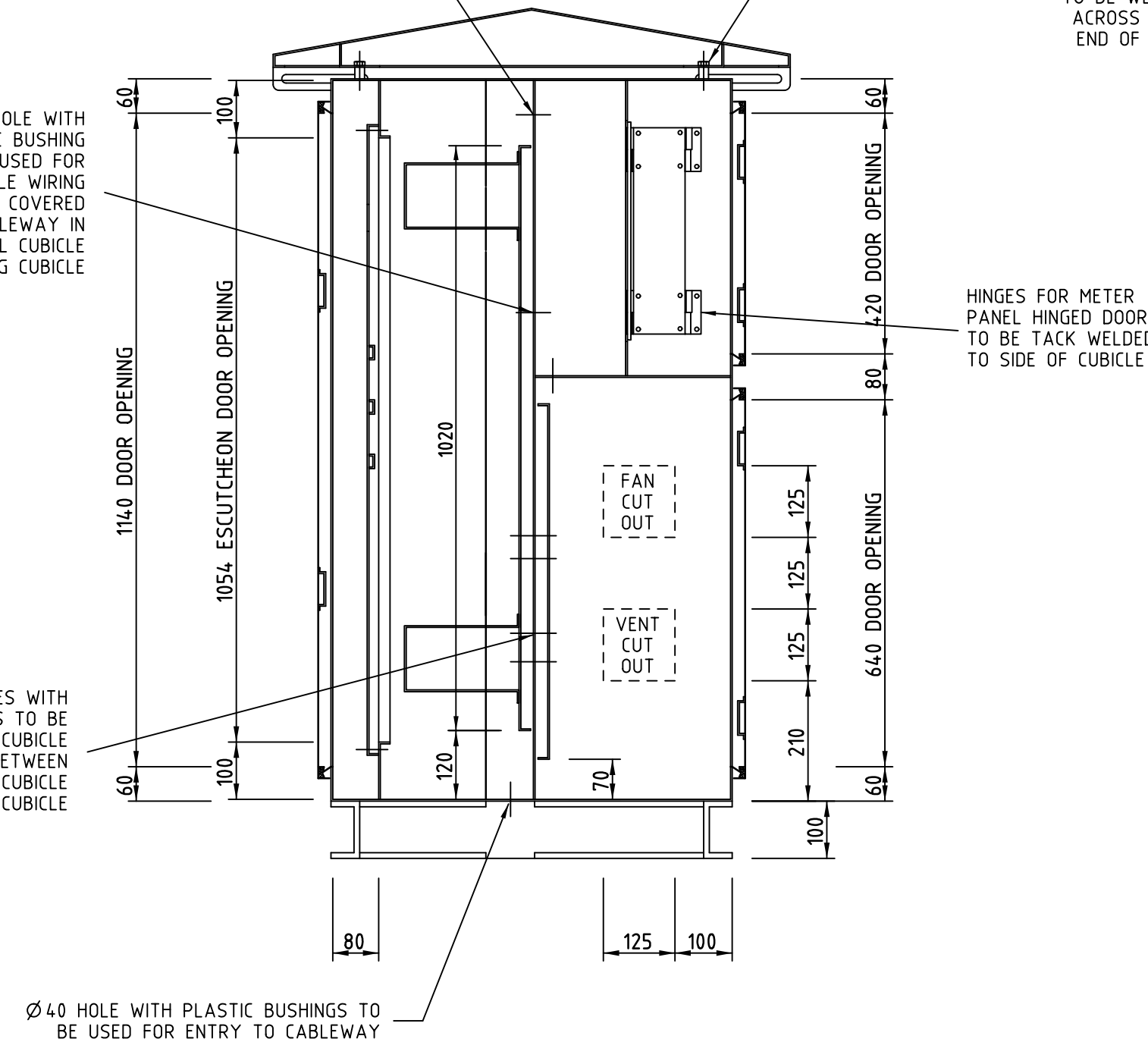
Ø40 HOLE WITH PLASTIC BUSHINGS TO BE USED FOR INTERCUBICLE WIRING BETWEEN CONTROL CUBICLE AND METER PANEL

180 WIDE PLATE TO BE WELDED ACROSS EACH END OF ROOF

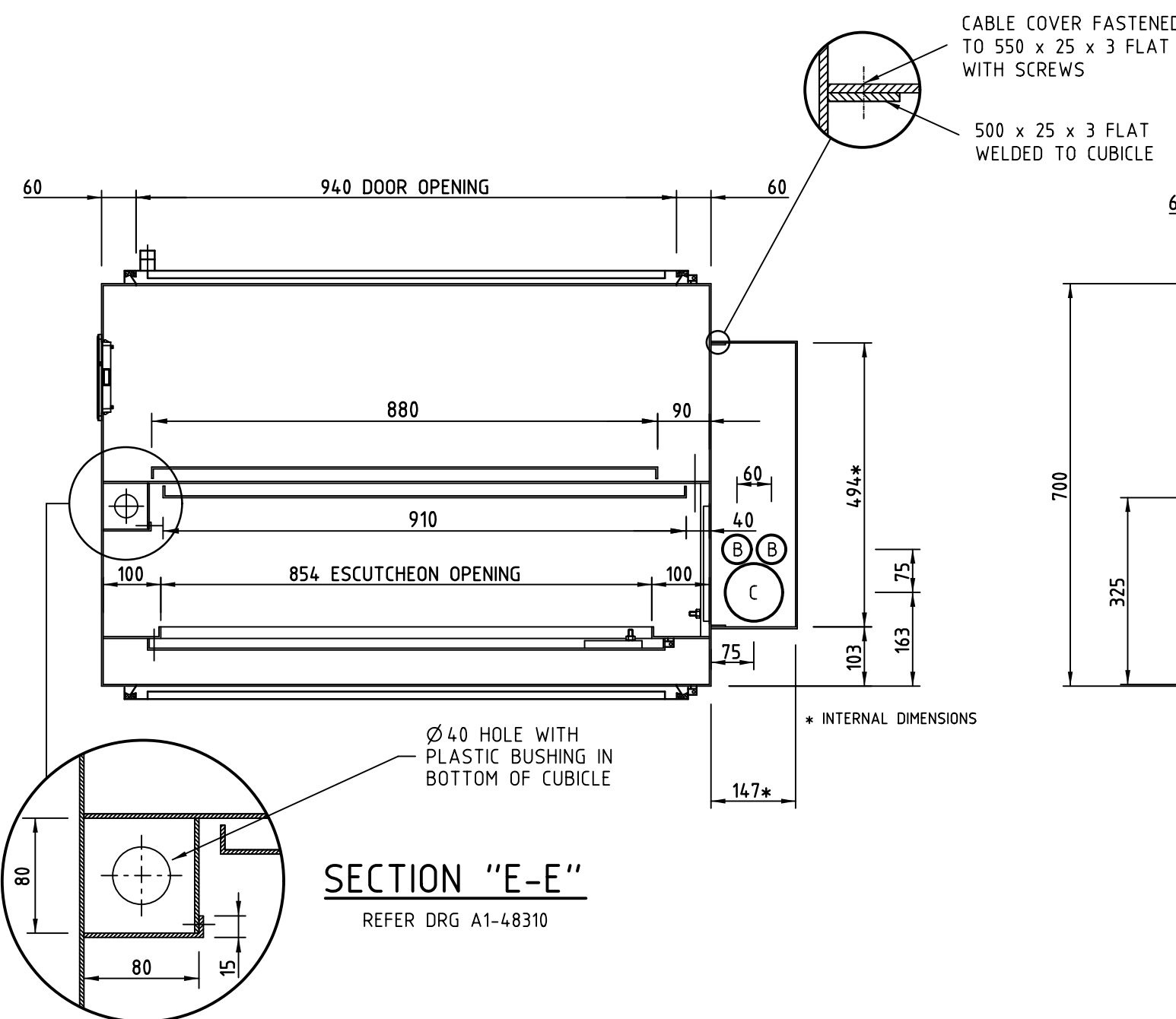
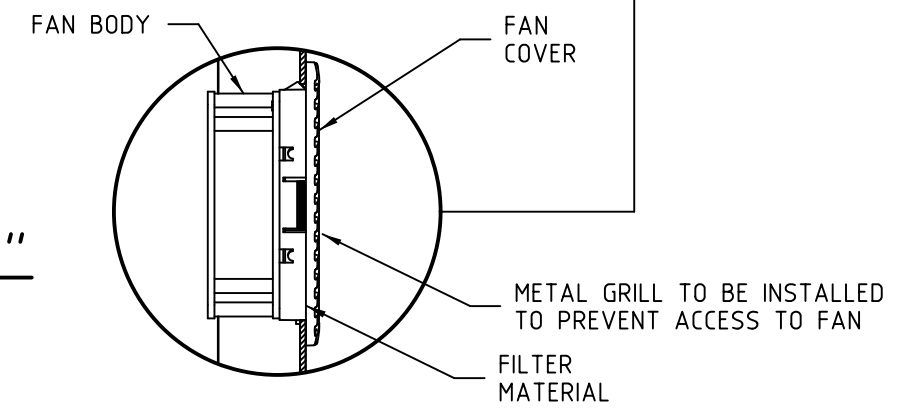
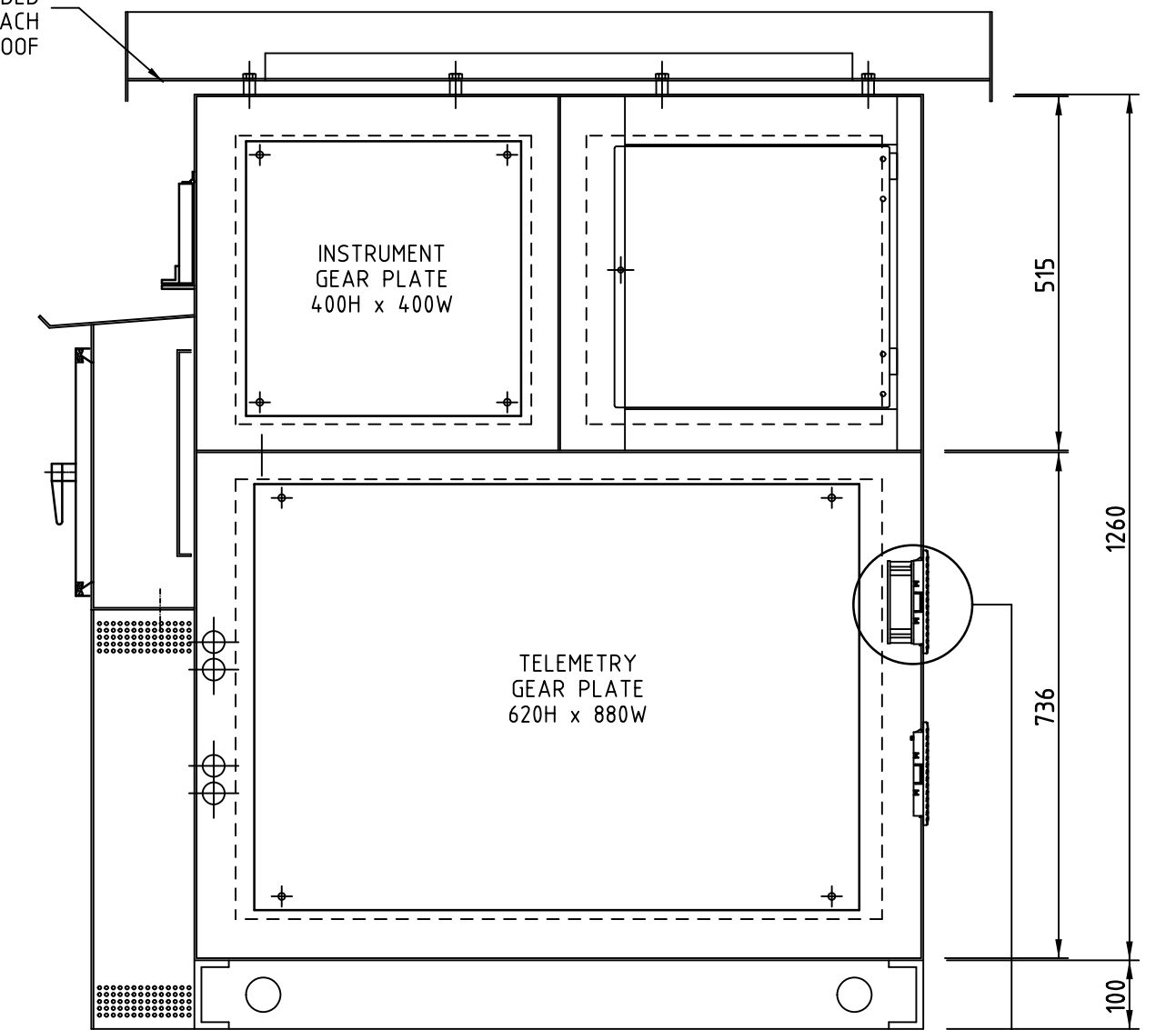


Ø32 HOLE WITH PLASTIC BUSHINGS TO BE USED FOR INTERCUBICLE WIRING BETWEEN METER PANEL CUBICLE AND CONTROL CUBICLE

M10 BOLT WITH WASHER & NUT, 20mm ALUMINIUM SPACER BETWEEN CANOPY & CUBICLE

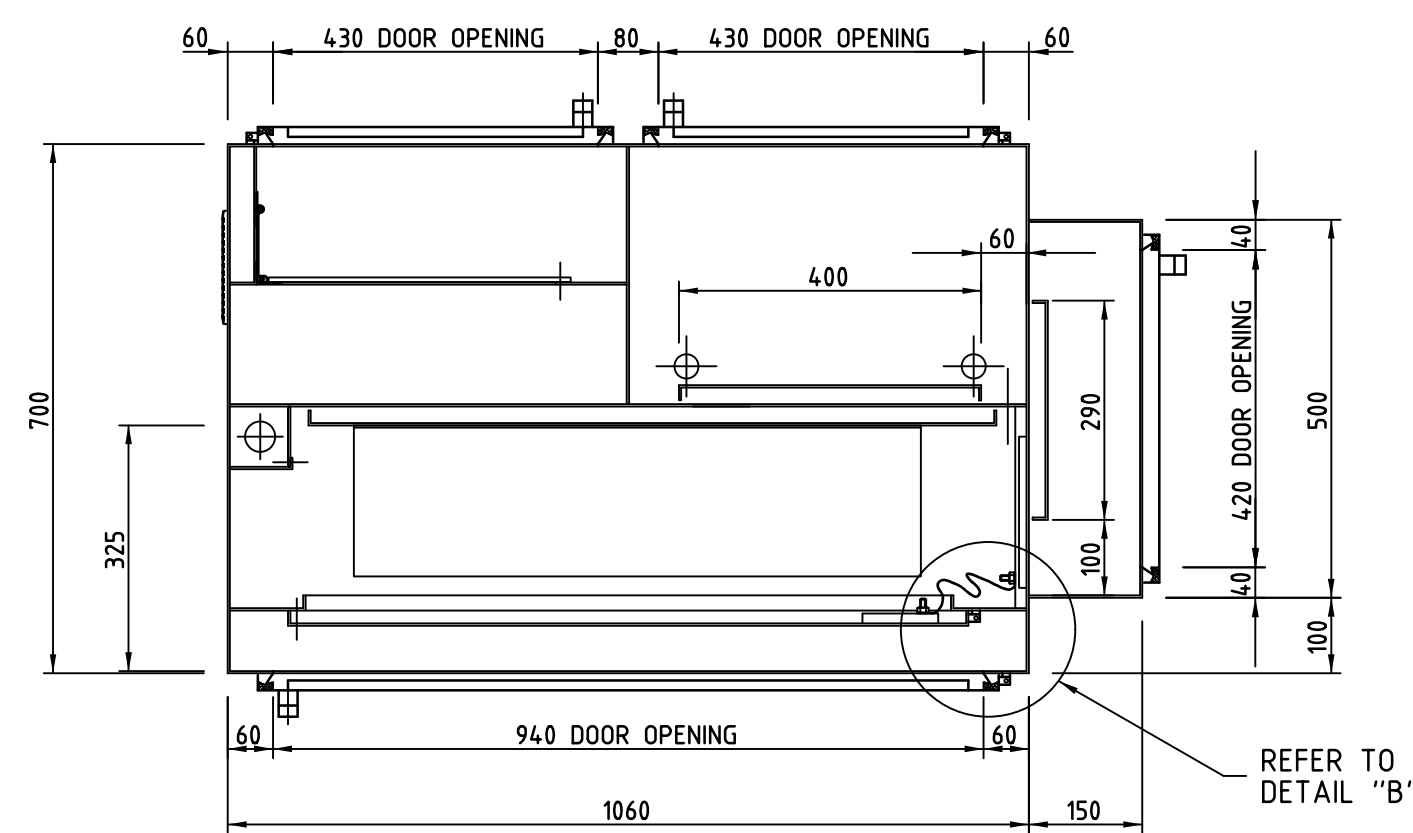


180 WIDE PLATE TO BE WELDED ACROSS EACH END OF ROOF



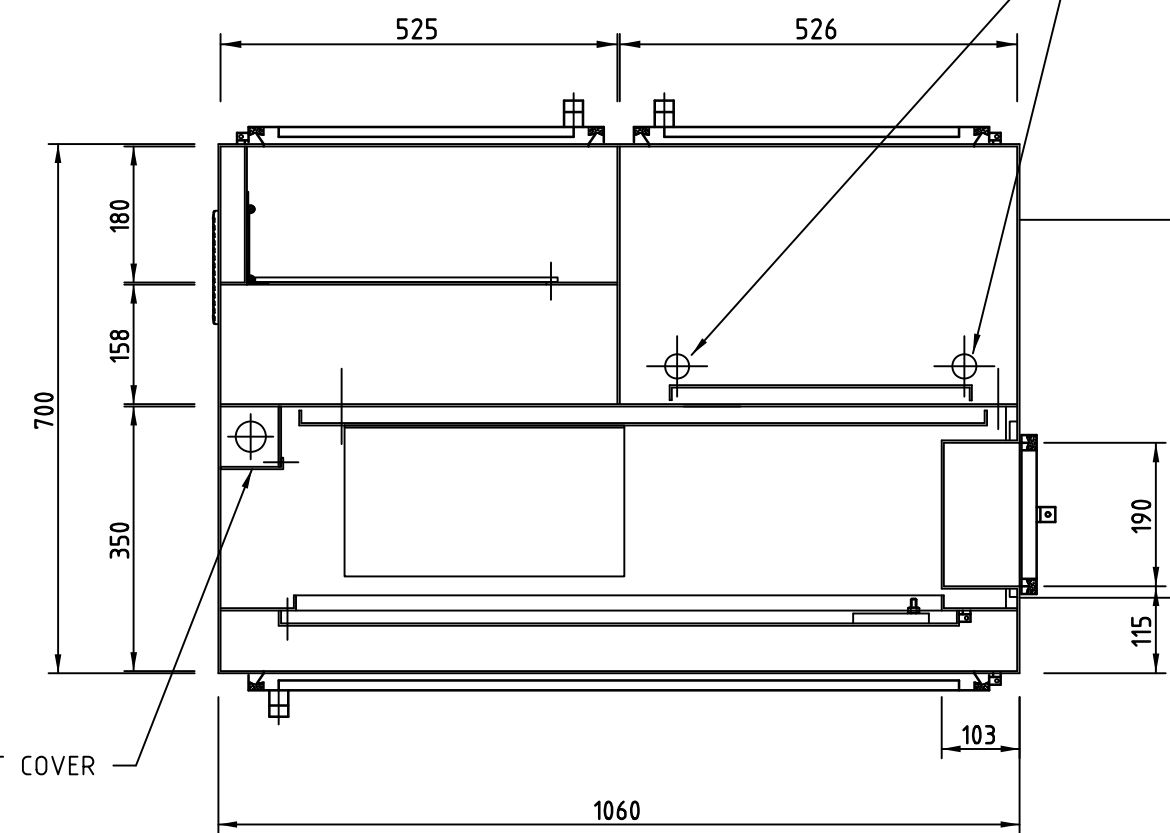
CABLE COVER FASTENED TO 550 x 25 x 3 FLAT WITH SCREWS

500 x 25 x 3 FLAT WELDED TO CUBICLE



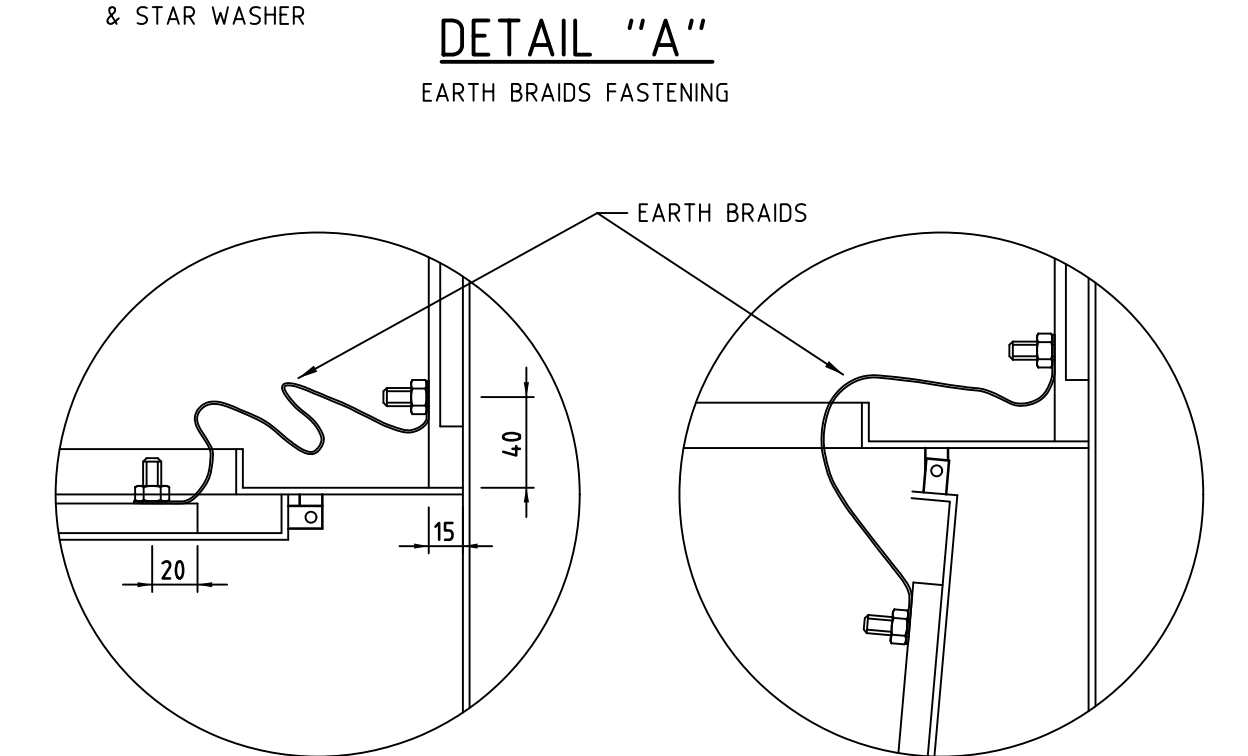
REFER TO DETAIL "B"

REMOVABLE FRONT COVER



2 x Ø32 HOLES WITH PLASTIC BUSHINGS TO BE USED FOR INTERCUBICLE WIRING BETWEEN INSTRUMENT CUBICLE AND TELEMETRY CUBICLE

M8 BOLT 20 LONG TACK WELDED TO C SECTION C/W NUT & FLAT WASHER & STAR WASHER



DETAIL "B"
CLOSED DOOR

DETAIL "B"
OPEN DOOR

No.	DATE	DESCRIPTION	APP'D	REFERENCES	PLAN No.	TITLE
13	10/11/20	REVISED TOP HAT DETAILS & SUPPORT BAR LOCATIONS.	P.S.			
12	16/11/17	ADDED TOP HAT FOR 24VAC/DC CIRCUIT BREAKERS.	G.F.			
11	12/7/17	REVISED FOR NEW CHANGEOVER SWITCH & PROCONNECT PLUG.	P.S.			

DESIGNED BY:

OPTIMUM
DRAFTING PTY LTD
A.B.N. 28 065 272 942

DO NOT SCALE	GIPPSLAND WATER DRAWING STATUS	STANDARD DRAWING	GIPPSLAND WATER FACILITY CODE XXCPXX
CERTIFICATION OF COMPLIANCE WITH GIPPSLAND WATER'S DESIGN & DRAFTING REQUIREMENTS.	DRAWN: 12/07/2017 - OPT/RJ	CHECKED: 19/07/2017 - P STEWART	DRAWING No. A1-48311
STANDARD SEWERAGE PUMP STATION PUMP STATION UP TO 5.5kw (DOL) BACK TO BACK CUBICLE SECTIONAL ARRANGEMENT - SHEET 1 OF 2			