

Water and wastewater availability in central Gippsland





About our region

Central Gippsland offers a unique combination of industrial land availability, raw water availability and wastewater services capable of supporting major new investment.

With well-established transport links providing efficient access to market, close proximity to Melbourne and strong local partnerships in place between government and the private sector, our region is open for business and welcoming of new investment.

About us



As a provider of a range of essential and innovative services across central Gippsland, we are a key facilitator of industry activity in the region. We're committed to expanding our collaboration with business and government to attract new investment and support the expansion of existing industries.



As the entitlement holder of significant quantities of raw water that is available now, we're keen to maximise the regional and social benefits of the resources we have available, particularly from an economic development perspective.

Our operational area spans from Drouin in the west, to Loch Sport in the east, from Briagolong in the north, to Mirboo North in the south. This covers approximately 5,000 square kilometres in the municipalities of Latrobe City, Baw Baw, South Gippsland and Wellington Shires.



We have strong relationships with local councils in Gippsland, which will help to initiate and facilitate development opportunities in the region. We also work in partnership with Regional Development Victoria, the Latrobe Valley Authority and GROW Gippsland to ensure we're building on and contributing to existing strategies and government priorities.



Water availability in central Gippsland

We're ready to work with industry and use available water to benefit the regional economy.

With around 63% of our supply being used by major customers, we have a deep understanding of existing local industries and an open mind to new and emerging water consuming sectors. We have sufficient capacity to offer large volumes of raw, treated and ultra-treated water.



Desired outcomes

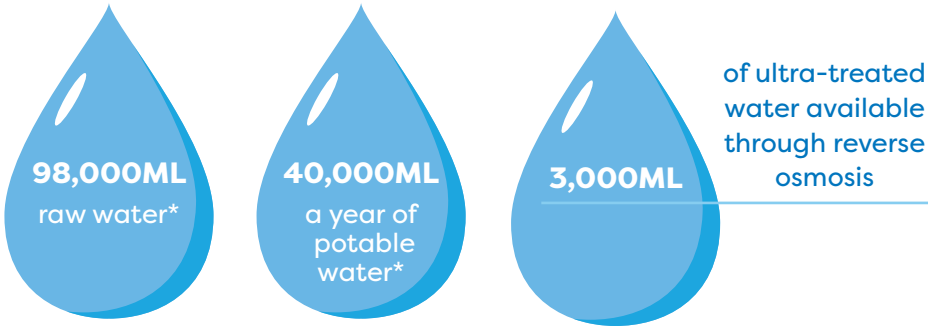
We're keen to be an enabler of economic and jobs growth and stability in central Gippsland.

We're open to opportunities that can deliver these outcomes either directly or indirectly, including through increasing business activity, opening up job opportunities and supporting regional population growth.

Our capability

Our capability

Our annual bulk entitlements include:



Available water: 20,000 ML/y*

*subject to conditions

Water-enabled investment opportunities

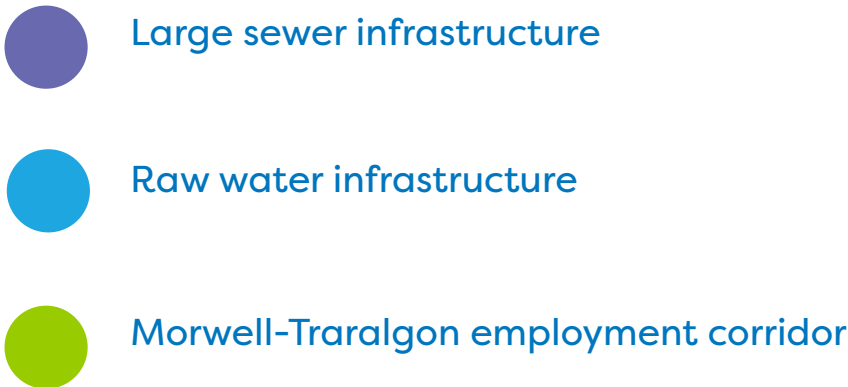
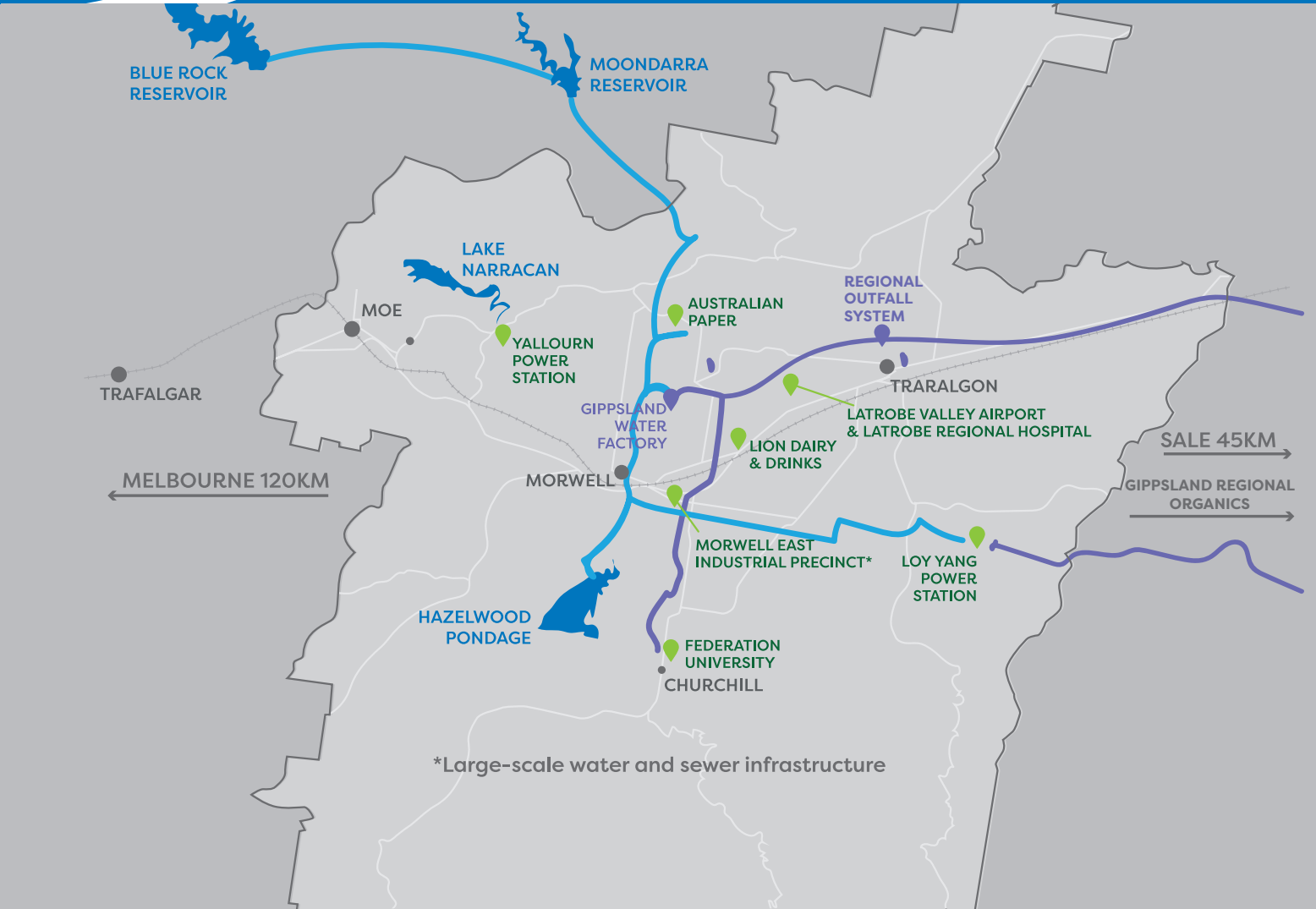
Within central Gippsland, the Latrobe Valley has experienced sustained industry growth, averaging 3.5 per cent over the last five years, including growth in health, professional services and public administration.

Complementary infrastructure

Our region is serviced by supporting infrastructure that may complement the opportunities presented by water availability.



Snapshot of the Latrobe system



Our assets and services

Investment opportunities

We offer the following services to industry:



**Raw and drinking
water supply**



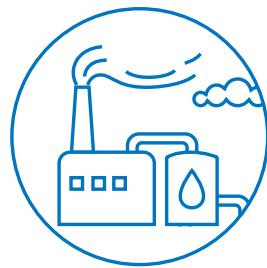
**Waste treatment &
management**



**Organic
waste recycling**



**Wastewater
services**



**Industrial
water treatment**



**Agribusiness
services**



**Potential land use
opportunities**

The combination
of available
water, significant
wastewater
infrastructure and
available land in
central Gippsland
offers broad and
diverse opportunities.



Manufacturing and food production

- Expansion of existing businesses
- Advanced manufacturing
- Breweries



Horticulture

- Advanced horticulture
- Protected cropping
- Irrigation
- Hydroponics



Aquaculture

- Conservation of native fish and biodiversity
- Geothermal water heating
- Hi-tech water treatment



Energy optimisation and renewables

- Floating solar
- Pumped hydroelectricity
- Coal to hydrogen conversion



Waste and material recovery

- Material recovery facilities
- Waste collection, remanufacturing and repurposing
- Recovery or reprocessing of metals

Treatment facilities

Organics recycling & waste management services



Wastewater treatment facilities

Our wastewater treatment network includes:

14 wastewater treatment plants located throughout our service area which treat around 30,000ML of domestic and industrial wastewater each year.

The Gippsland Water Factory at Maryvale is our largest wastewater treatment plant, treating 35 million litres of wastewater daily from nine towns and a number of major industrial partners in central Gippsland.

The Gippsland Water Factory has the capability to treat up to 3,000 ML/y of ultra-treated wastewater through reverse osmosis and make this water available to industry.

Septage receival services at our Moe wastewater treatment plant, Gippsland Water Factory, and Gippsland Regional Organics (Dutson Downs).

A \$55m upgrade to our Drouin wastewater treatment plant is underway and due to be completed in 2022, which will provide additional domestic and industrial wastewater treatment capacity in the Warragul/Drouin area.

There is capacity for further growth and additional industry opportunities within our wastewater network.

Water treatment facilities

Our water treatment network includes:

15 full conventional water treatment plants located throughout our service area supplying around 18,000ML of drinking water each year to public health Safe Drinking Water Act standards. Six of these are fluoridated drinking water supplies.

Raw water sources include groundwater bores, run of river and reservoirs.

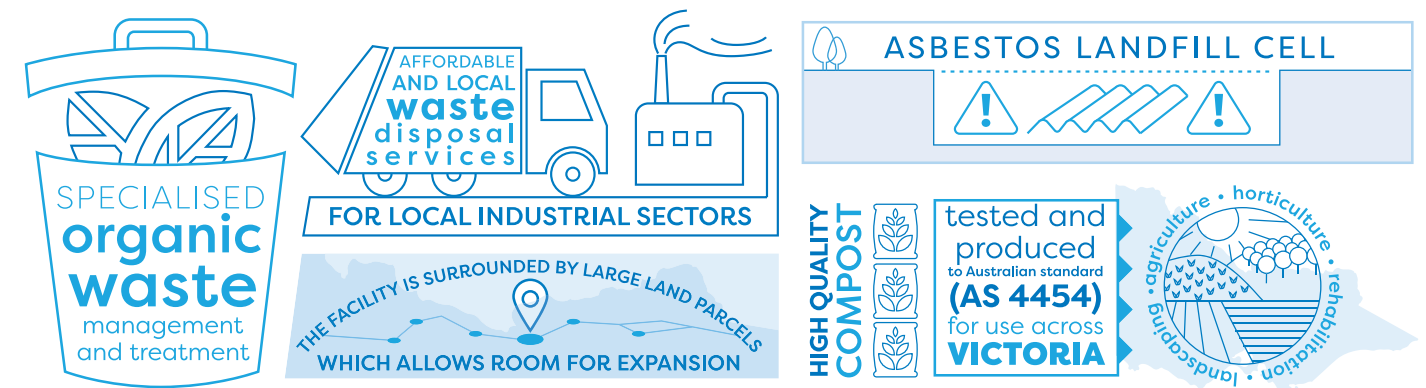
2,000 kilometres of water network mains, 65 treated water storages and 48 treated water pump stations.

We own and operate a significant EPA-licensed, multi-purpose waste management and compost production facility with the capacity to receive up to 250,000 tonnes of waste each year.

We play a significant role in supporting an environmentally sustainable circular economy in Victoria and our Dutson Downs site is acknowledged as a critical hub in the Statewide Waste and Resource Recovery Infrastructure Plan.

Our waste management facility is surrounded by large land parcels, allowing room for expansion.

As a trusted waste management operator and compost producer in the Gippsland region, we provide a variety of solutions and products including:





**Gippsland
Water**

PO BOX 348
55 Hazelwood Road
Traralgon VIC 3844

Account enquiries 1800 050 500
Faults and emergencies 1800 057 057

contactus@gippswater.com.au
www.gippswater.com.au

ABN 75 830 750 413