

WHERE PE PIPE IS USED A 1.5m (MIN.) BENDABLE TEMPER COPPER TAIL IS REQUIRED PRIOR TO BALL VALVE 'A'

PE TO COPPER TRANSITION CONNECTOR

TITLE BOUNDARY

STANDARD DOMESTIC METER ARRANGEMENT

DETECTABLE TAPE & MARKING STAKE REFER NOTES 5 & 6

0.3m min.
0.6m max.

LOCATION OF BALL VALVE 'A' PRIOR TO INSTALLATION OF METER. REFER NOTE 1 FOR COVER PROTECTION.

REFER STANDARD DRAWING MRWA-W-110

1.5m min.
2.0m max.

REFER STANDARD DRAWING MRWA-W-110

INSTALLED BY CONTRACTOR

LOCATION TO BE RECORDED BY CONTRACTOR

TAPPING CONNECTION TO WATER MAIN. REFER STANDARD DRAWING MRWA-W-110

REMOVE

BALL VALVE 'B'

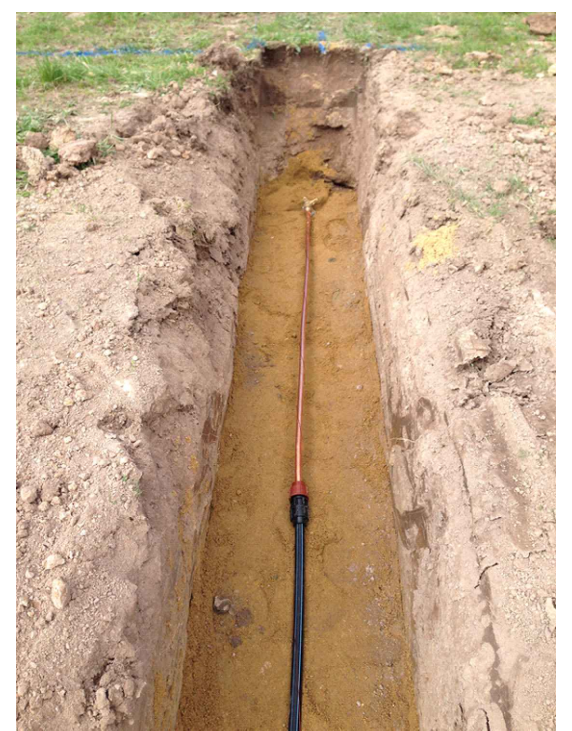
ADD

FOR NEW OR "DRY" INSTALLATIONS, USE VINIDEX PRE-TAPPED CONNECTOR C/W TOP MOUNTED FERRULE CONNECTIONS OR APPROVED EQUIVALENT. FOR "WET" INSTALLATIONS, TAPPING BANDS WITH FERRULES MAY BE USED. BALL VALVES ARE NOT TO BE USED AS SERVICE ISOLATIONS. TO BE READ IN CONJUNCTION WITH MRWA-W-111.

TYPICAL PROPERTY SERVICE DETAIL
NOT TO SCALE

NOTES:

- Ball valve 'A' is the service connection ball valve, which is to be left in the closed position after construction with the handle to the top, the sealing plug installed, the valve protection cover placed over the valve and backfilled.
- Male thread on all fittings must be wrapped in PTFE (Teflon) tape.
- Property service pipe must be embedded in washed free flowing sand (min. 100mm underlay and side support, overlay to within 100mm of the finished surface level).
- Where copper service pipe is used, an insulation coupling must be provided between ball valve 'B' and the service line.
- Detectable marking tape to be included along the entire property service length as per WSA 03-2011 (MRWA Edition), Section 5.4.16.1
- Marking stake to be installed above the cover protection of valve 'A', with the marker tape wrapped around stake.



PHOTOS OF TYPICAL SERVICE INSTALLATION

UNDER REVISION

Changes are highlighted for immediate adoption. Please direct any queries to the Land Development team

				DO NOT SCALE		GIPPSLAND WATER TYPICAL DRAWING ONLY		GIPPSLAND WATER FACILITY CODE	
				CERTIFICATION OF COMPLIANCE WITH GIPPSLAND WATER'S DESIGN & DRAFTING REQUIREMENTS.		DRAWING STATUS		DRAWING No. REV.	
				DESIGNED: 10/8/15 GBS		DRAWN: 10/8/15 JMB		A3-59295 a2	
				CHECKED: 10/8/15 GBS		TYPICAL DRAWING WATER SUPPLY TYPICAL PROPERTY SERVICE DETAILS			
REVISIONS	0	10/8/15	ISSUED AS TYPICAL DRAWING	GBS	REFERENCE	PLAN NO.	TITLE		
	1	15/10/15	TYPING ERRORS FIXED	GBS					
	a2	18/6/25	UNDER REVISION - SERVICE CONNECTION NOW PRE-TAPPED CONNECTOR WITH FERRULES	SPEC					
	No.	DATE	DESCRIPTION	APP'D					