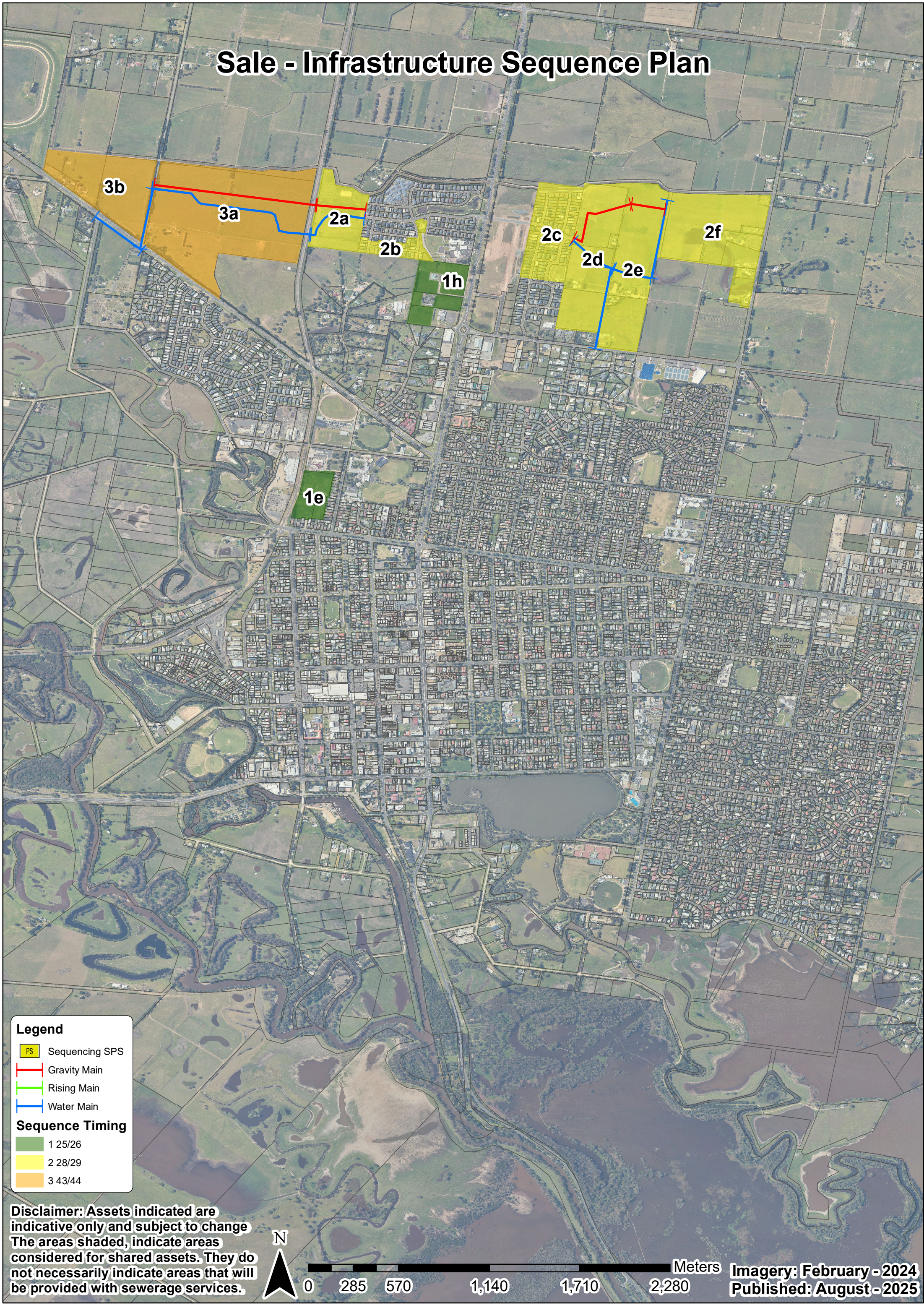


# Sale - Infrastructure Sequence Plan



**Legend**

- PS Sequencing SPS
- Gravity Main
- Rising Main
- Water Main

**Sequence Timing**

1 25/26
2 28/29
3 43/44

**Disclaimer:** Assets indicated are indicative only and subject to change. The areas shaded, indicate areas considered for shared assets. They do not necessarily indicate areas that will be provided with sewerage services.



**Imagery:** February - 2024  
**Published:** August - 2025