

Gippsland
Water

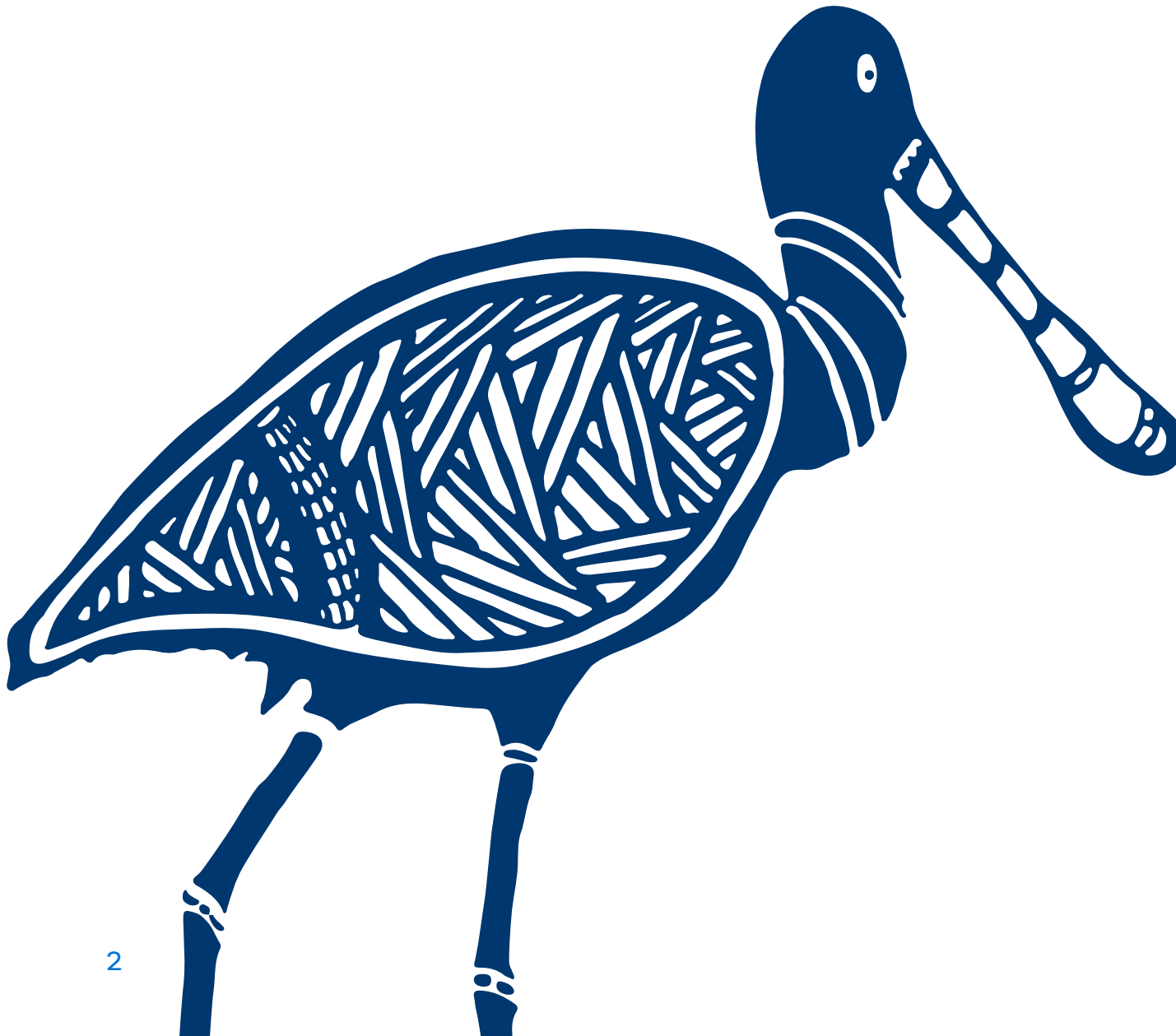
Water and waste services for business and industry



Acknowledgment

We acknowledge the Traditional Owners of the land we work on, the Gunaikurnai people and the Bunurong people, and recognise their strong cultural connection to the land and waterways.

We pay our respect to their Elders, past and present.



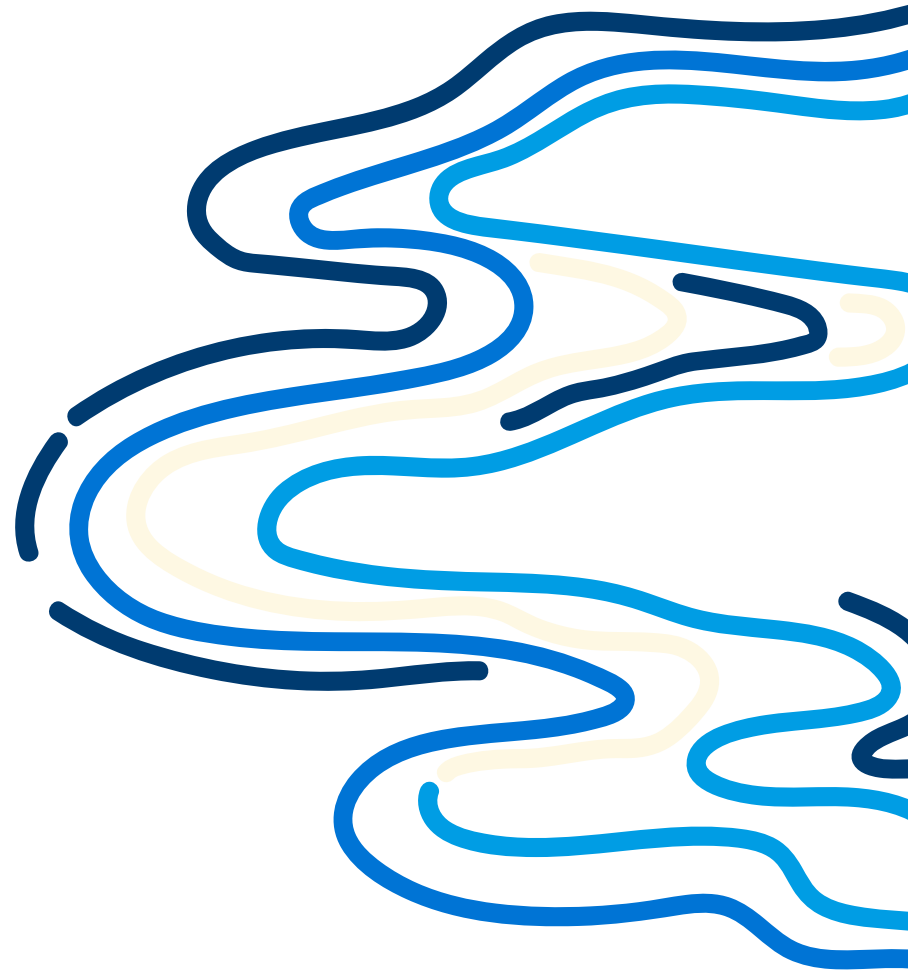


About Gippsland

Just an hour from Melbourne, central and west Gippsland is a unique location perfectly positioned to support new investment.

The region's natural environment, resources, digital connectivity and established transport links have already allowed energy, manufacturing, tourism, food and fibre sectors to thrive, making it a popular place to live, work and invest – a place of progress, new energy and opportunity.

The region is the heart of Victoria's power industry, and recently became a leader in the nation's energy transition after being named Australia's first offshore wind energy zone.





About us

We are the state's major industrial water supplier and for decades supported critical industry including power generation, paper mill production and food manufacturing.

We provide essential water and wastewater services to a population of about 168,000 people across central and west Gippsland.

Our service area covers more than 5,000 square kilometres, across Baw Baw Shire, Latrobe City, Wellington Shire, and South Gippsland.

As a key facilitator of industry activity across our service area, we are committed to continuing our collaboration with business and government and are open to exploring new opportunities.



MORE THAN
2,300km
of water mains,
50 TREATED
WATER STORAGES
and 45 pump
stations

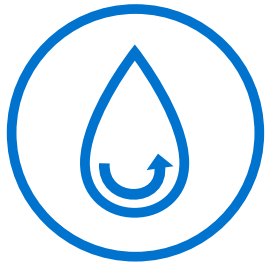


MORE THAN
1,900km
of sewer mains,
and 200
sewer pump
stations



15
water
TREATMENT
plants

We own and maintain a \$1.7 billion infrastructure network



14

**WASTEWATER
TREATMENT**
plants including
the Gippsland
Water Factory



2

**OCEAN
OUTFALLS**
• McGaurans
Beach and
Delray Beach •



100K

CUSTOMERS
in a population
of 168,000

We are the entitlement holder of a significant quantity of raw and treated water and are committed to maintaining our position as enablers of economic growth and job creation.

We have sufficient capacity to offer large volumes of raw and treated water. We also have a deep understanding of the needs of existing local industries and new and emerging water consuming sectors.

We work in close partnership with local and state government economic development teams and regional development groups.

We run two commercial businesses, Gippsland Regional Agribusiness and Gippsland Regional Organics at our property in Dutson Downs.



↑
MOUNT BULLER

LAKES ENTRANCE →

← **MELBOURNE**

BASS STRAIT


WILSONS PROMONTORY
↓



- LICOLA
- THOMSON RIVER
- WELLINGTON RIVER
- LOCH RIVER
- TOMORONGA RIVER
- THOMSON RESERVOIR
- ABERFEDY RIVER
- MT. BAW BAW
- NOOJEE
- MT. ERICA
- GLENMAGGIE
- COONGULLA
- BRIAGALONG
- BOISDALE
- RAWSON
- ERIC A
- HEYFIELD
- MAFFRA
- STRATFORD
- TOONGABBIE
- COWWARR
- HEYFIELD
- MAFFRA
- STRATFORD
- LOCH SPORT
- Lake Victoria
- Lake Wellington
- Lake Coleman
- NEERIM SOUTH
- ROKEBY
- WILLOW GROVE
- YALLOURN NTH
- TYERS
- GLENGARRY
- FULHAM
- WURRUK
- SALE
- DROUIN
- WARRAGUL
- NILMA
- DARNUM
- YARRAGON
- TRAFALGAR
- MOE
- NEWBOROUGH
- MORWELL
- TRARALGON
- ROSEDALE
- WURRUK
- SALE
- THORPDALE
- CHURCHILL
- TRARALGON NTH
- TRARALGON STH
- YINNAR
- JUMBUK
- BOOLLARRA
- MIRBOO NTH
- LEONGATHA
- INVERLOCH
- WURRUK
- SALE
- DUTSON DOWNS
- GOLDEN BEACH
- HONEYSUCKLES
- SEASPRAY
- PAYNESVILLE

Why invest in Gippsland?

Our region is one of the best-positioned in the country to support water-dependent investment with abundant water resources and strategically located water and wastewater infrastructure.



Other benefits include proximity to the state's existing power grid infrastructure, designated investment precincts, rail and highway connections, land availability and affordability.

Gippsland is also home to a multiskilled workforce, particularly those with experience in the energy and engineering sectors.

As the state's traditional power generation region, we have a highly skilled workforce which is transitioning to emerging sectors like renewable energy, engineering and manufacturing.

Furthermore, power infrastructure and dark cable communication channels are within close proximity making the area attractive for strategic investment.

Our offering

Up to 20 gigalitres of water available, supported by infrastructure to move it towards Gippsland's key industrial zones.

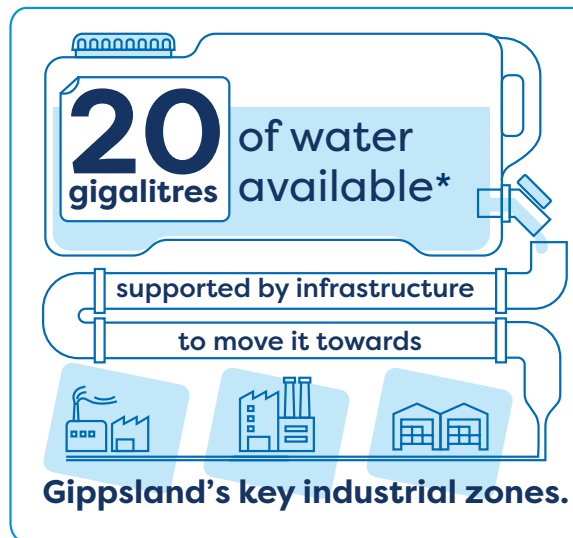
We offer raw and drinking water supply; domestic and industrial wastewater treatment, organic material recycling and agribusiness services.

These services open doors for investment opportunities including manufacturing and food production, horticulture, aquaculture, energy optimisation and renewables, waste, and material recovery.

We have nationally competitive and abundant water resources, wastewater services and strategically located infrastructure for large scale water-dependent industries to thrive near Australia's most populous capital city, Melbourne.

The information below highlights our capabilities, capacity, and \$1.7 billion infrastructure network.

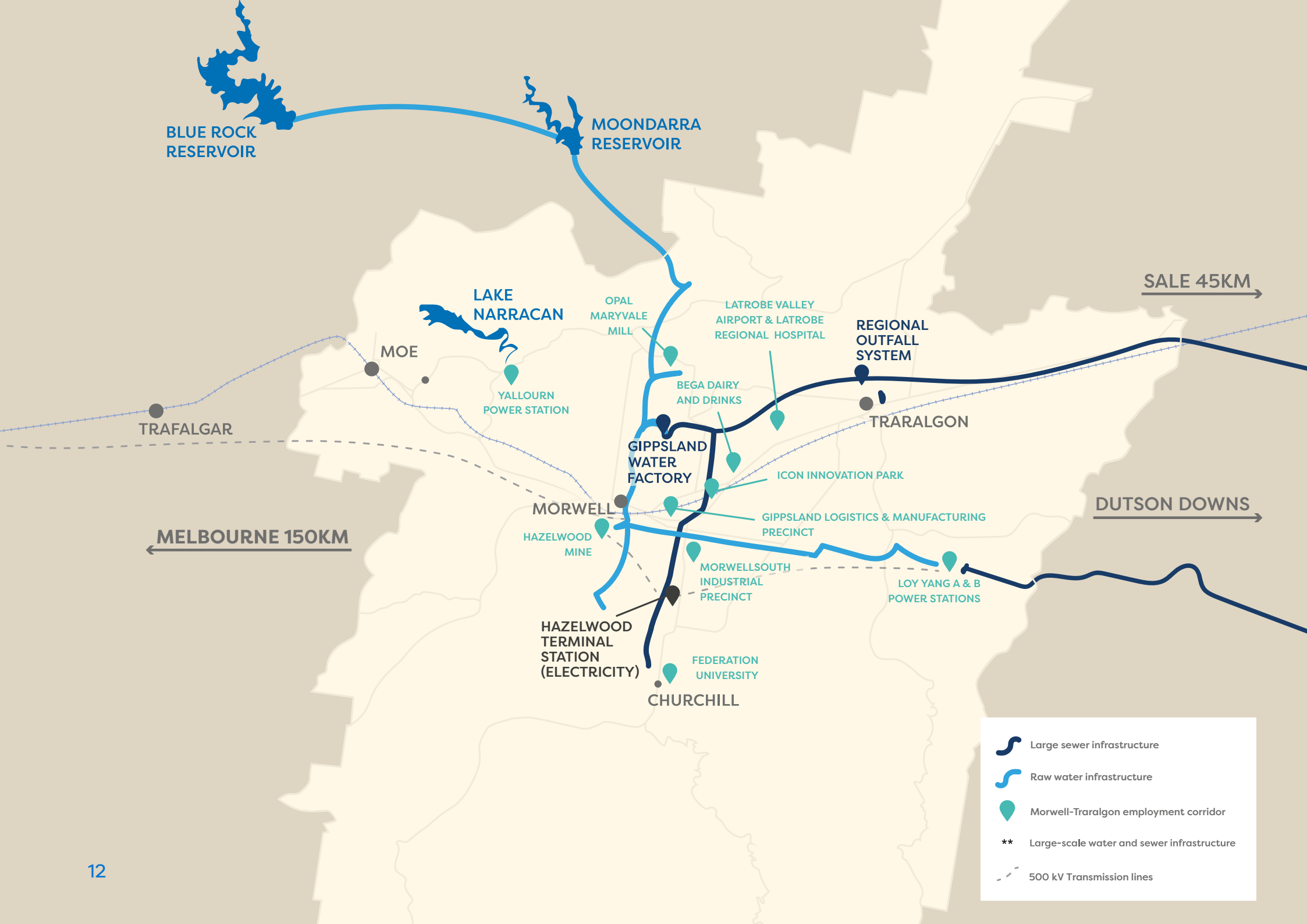
Raw and treated water services

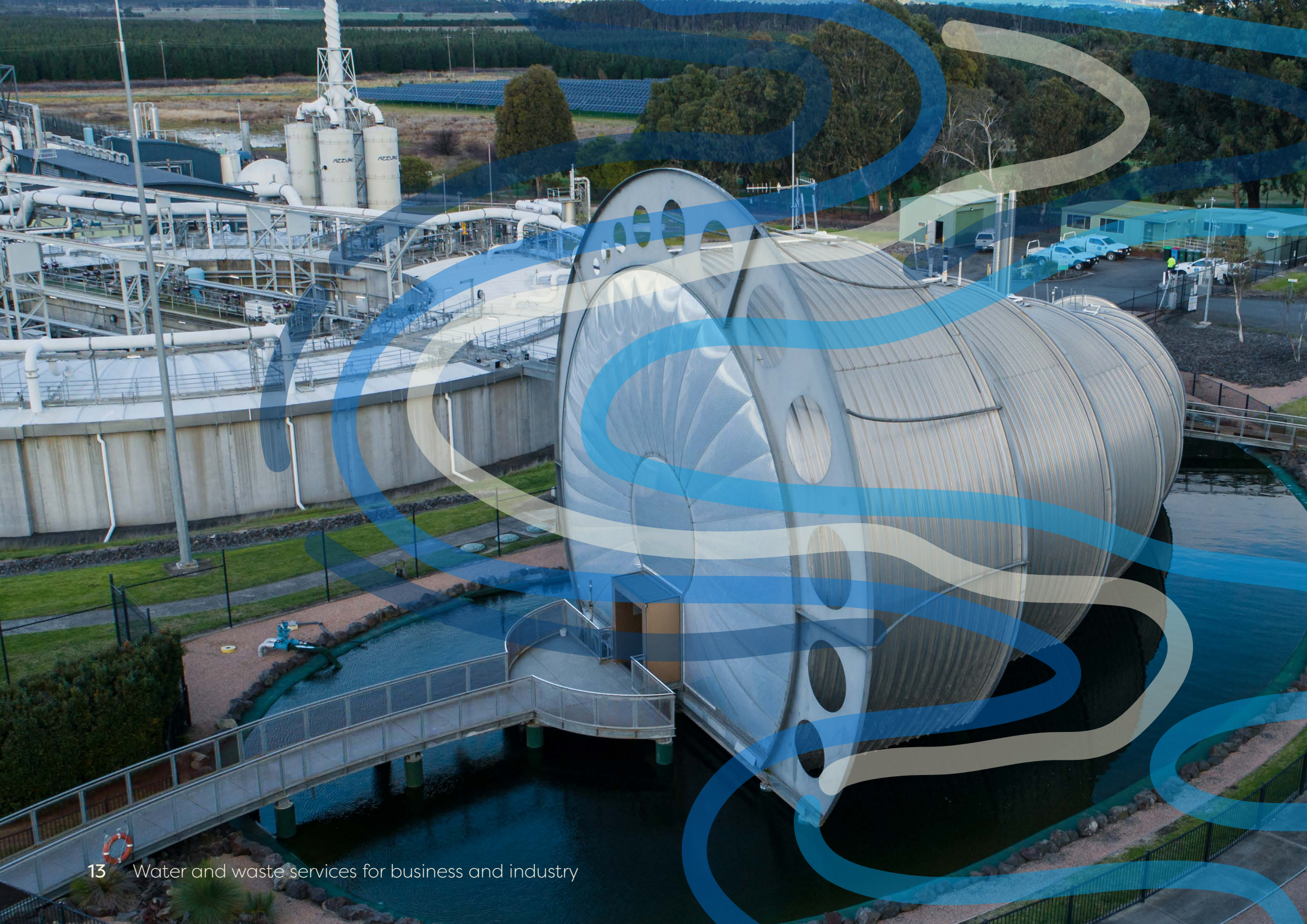


Waste and wastewater management



* dependant on storage levels and other demands

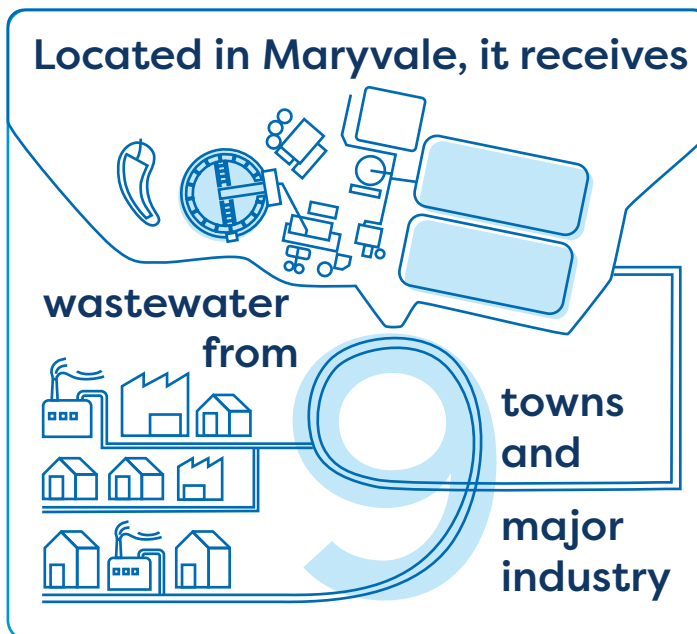




Gippsland Water Factory

The Gippsland Water Factory is our largest wastewater treatment plant and one of our largest assets.

It plays a critical role in supporting major local industry, including paper, food, healthcare and power.



It treats an average of

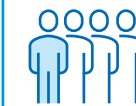
20 million litres of

wastewater **every day.**

(12 ML/day domestic and 8ML/day industrial)



The factory services more than



48,000 customers



and **300 local businesses.**

An icon depicting a factory building with a chimney, a shopping cart, a mail envelope, and a plus sign, representing local businesses.

Organic recycling

We own and operate Gippsland Regional Organics, a significant EPA-licensed waste management and compost production facility in Dutson Downs. The facility transforms approximately 250,000 tonnes of waste into compost each year.

Many of our compost products have an Australian Standard (AS4454) certification.

Gippsland Regional Organics is surrounded by large land parcels – some are occupied by our other commercial business, Gippsland Regional Agribusiness.

Gippsland Regional Agribusiness operates 12 farming and forestry properties covering across the central Gippsland region – covering approximately 10,000Ha. All properties are managed sustainably with a focus on soil and animal health.

New renewable technology at Gippsland Regional Organics.

We're investigating potential opportunities to establish a wet anaerobic digester waste to energy facility.

Anaerobic digesters convert organic waste, such as food and agricultural waste, into renewable energy (biogas).

This would enable Gippsland Regional Organics to process more organic waste and generate renewable energy – either for use by Gippsland Regional Organics or local grid consumption.



Other publications

- [Gippsland Water Climate Change Strategy](#)
- [Wellington Shire Investment Prospectus](#)
- [Latrobe City Economic Snapshot](#)
- [Baw Baw Shire Business Prospectus](#)
- [Latrobe Valley and Gippsland Transition Plan](#)



Get in touch

Contact our Economic Development team:

Email: ecodev@gippswater.com.au

Phone: 1800 050 500





Gippsland Water

PO Box 348
55 Hazelwood Road
Traralgon VIC 3844

General enquiries 1800 050 500
Faults and emergencies 1800 057 057

ecodev@gippswater.com.au
www.gippswater.com.au

ABN 75 830 750 413